

Everything in  
**Solenoid**  
Solution



- Solenoid & Proportional Solenoid Valves
- Solenoid High Pressure for CNG Dispenser
- Ad Blue Solenoid valve
- Shear Valves for Fuel Dispensers
- Fuel Dispenser Hanging Accessories

**Infinity**<sup>®</sup>


[www.infinitycontrols.com](http://www.infinitycontrols.com)



# Quality

We have put in place standard quality control department to ensure the top-notch quality of our products. All our products go through stringent quality checks at various intervals of manufacturing process before going for dispatch. We also have quality check lab with latest equipment to perform the necessary quality tests. We have set certain quality parameters that must be followed all the time.

- ☒ All the procured raw materials must be analysed on spectrometer and only the best quality raw material is used in production.
  - ☒ Each design pattern is made of graded aluminium casting and is well polished and thoroughly examined before the production run.
  - ☒ Complete quality check at every step of the production process by highly experienced professionals.
  - ☒ Every casting product is inspected for dimensions and foundry defects such as surface porosity, inside outside finish and composition.
  - ☒ All the quality records are properly maintained and documented.
  - ☒ All the machineries, instruments and equipment are periodically checked to ensure consistent performance.
- Our management is committed to constantly improve the quality management system and customer satisfaction through periodic training of employees, collection of customer feedback, adapting new technology and auditing company performance. We set and attain new quality objectives each year. This can only be achieved through the persistent support of our employees.



**Certificate of Registration**

This is to certify that the Management System of:


**SHAYRI METALS**

Registered Office:  
2, Laxmi Nagar, Near Vanand Seva Samaj, Rajkot - 360 004, Gujarat, India

And as detailed on the Annex to this certificate

has been approved by Alcumus ISOQAR and is compliant with the requirements of:


**ISO 9001:2015**

	<p>Certificate Number: 8278-Q15-001</p> <p>Initial Registration Date: 10 February 2010</p> <p>Previous Expiry Date: 10 February 2022</p> <p>Recertification Date: 01-02 January 2022</p> <p>Re-issue Date: 11 February 2022</p> <p>Current Expiry Date: 10 February 2025</p>
---	--

**Scope of Registration:**

Design, Develop and Manufacture of Solenoid Pumps, Solenoid Operators/proportional solenoid valve 24V DC and 230V AC, Solenoid Valves, (12V DC, 24V DC & 220-230V AC-One Way, Two Way and Three Way), Shear Valve Single and Double Poppet, Nozzel Vapor Recovery Breakaway, Infinity Coil 24V DC and 230V AC, Aluminium Parts, Brass parts, Dispenser Hanging Hardware, Breakaway Couplings and accessories

Signed:  
Steve Stubley, Technical Director  
(on behalf of Alcumus ISOQAR)



This certificate will remain current subject to the company maintaining its system to the required standard. This will be monitored regularly by Alcumus ISOQAR. Further clarification regarding the scope of this certificate and the applicability of the relevant standards' requirement may be obtained by consulting Alcumus ISOQAR.

Alcumus ISOQAR Limited, Alcumus Certification, Cobra Court, 1 Blackmore Road, Stretford, Manchester M32 0QY.  
T: 0161 865 3699 F: 0161 865 3685 E: iso.enquiries@alcumusgroup.com W: www.alcumusgroup.com/isoqar  
This certificate is the property of Alcumus ISOQAR and must be returned on request.



A global brand in solenoid valves produce by **Shayri Metals**, is a specialized manufacturer, which has experience over 3 decades in producing the various types of solenoid valves, solenoid pumps & related accessories like break aways.

The professional management team & advance machine infrastructure ensure that we have a good R&D, QC capability. Not only do Infinity have the most advanced CNC / VMC machines but also the technical engineers who have a lot of experience in designing & producing the solenoid valves specially for fuel dispensers & other critical applications.

With ISO 9001:2015 , quality system has set up through out the company. Infinity also conforms some of the highest domestic & international design standards & approvals like EN, ATEX, IECEx, & CCE to meet customer requirement globally.





## Inspection facility

Sr. No.	Description Of Measuring & Monitoring Resources	Make
1	Air Gauge	Baker
2	Air Gauge Unit	Baker
3	Bore Gauge	Mitutoyo
4	Depth Gauge	Insize
5	Dial Indicator	Baker
6	Dial Vernier	Baker
7	Digital Hight Gauge	Baker
8	Digital Tem. Controller	Trilok
9	Digital Theraomometer	-
10	Digital Varnier	Baker
11	Hardness Testing Machine	Fine Testing
12	Micrometer	Baker
13	Plunger Type Dial Indicator	Baker
14	Radius Gauge	Kristeel
15	Surface Table	Luthara
16	Thread Plug Gauge	Baker
17	V Block (L,R)	Black Hawk
18	Coating Thickness Gauge - Fe & NFe	Insize
19	CMM	Accurate

# INDEX



## Solenoid & Proportional Solenoid Valve



### Solenoid Valve for Fuel Dispensers

Type	Model No	Page
2 way 2 stage solenoid valve	IN 4110 F	07 to 08
3 way 2 stage solenoid valve	IN 4111 F	09
2 way 2 stage solenoid valve	IN 4150 F	10 to 14
Proportional solenoid valve	IN 4370 F	15 to 16
2 Way 2 stage solenoid valve for LPG	IN 3350 F	17 to 18
Pilot Operated High-Pressure Solenoid Valves Compressed Natural Gas Valves	IN 1002 H	19



## INSV series of Emergency Shut-off Valves



### Shear valve

Type	Model No	Page
Shear Valve	AT/SM/SV/ASSY/02	21 to 22
Shear Valve -SS		23 to 24
Shear Valve Union Type		25 to 26



## Accessories



Type	Model No	Page
VR Break aways	VRB-109	28
Nozzle Break aways	NOZ-IN 56095	29
Pump Break aways	PUMP-IN 56135	30
Break aways 1" & 3/4" Standard	IN 4650 B	31 to 32
Sight flow indicator	IN 4650 A	33
Double Plane Swivels	INFI-SW-001	34

# Solenoid & Proportional Solenoid Valves



Solenoid & Proportional Solenoid Valves  
for Fuel Dispensers

---



## Solenoid valves for fuel dispensers

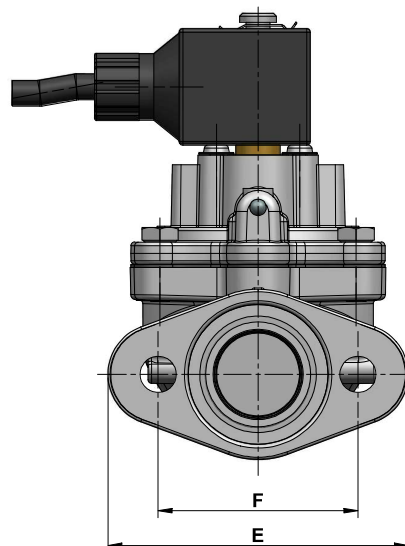
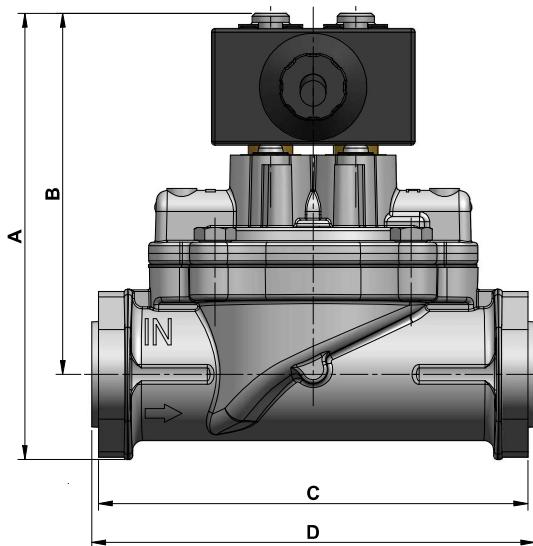
### 2way -2 stage solenoid valve

Model No.: IN 4110 F



#### TECHNICAL SPECIFICATION :

Type	: 2 Way - 2 stage solenoid valve(NC)
Port size	: Flange Typ
Period	: Continuous
Insulation class	: F
Working fluid pressure	: 0.35 bar to 3.5 bar
Body material	: Aluminium
Diaphragm	: FPM (Fluoroelastomer)
Orifice	: 2.5 mm / 25 mm
Operating voltage	: 230V AC / 24V DC / 12V DC
Wattage	: 2. x 6.9 W (230V) & 2 x 6.25W (24V DC) & 2 x 6.8W (12V DC)
Fluid media	: Petrol / Diesel
Ambient temp.	: -40°C to + 65°C
Approvals	: ATEX, IECEX, PESO



Dimensions are in mm

Model No	Port Size	A	B	C	D	E	F
IN 4110 F	Flange	119	97	116	119.7	81.2	54



## Solenoid valves for Ad Blue (DEF) dispensers

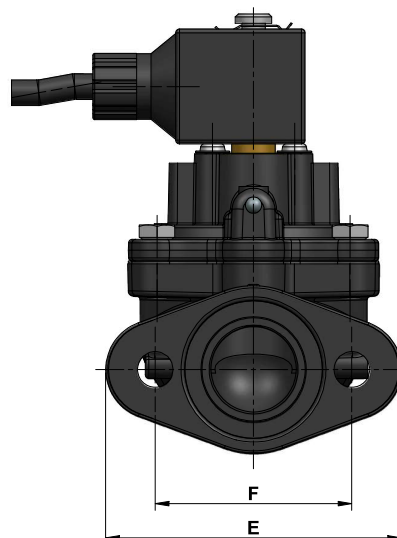
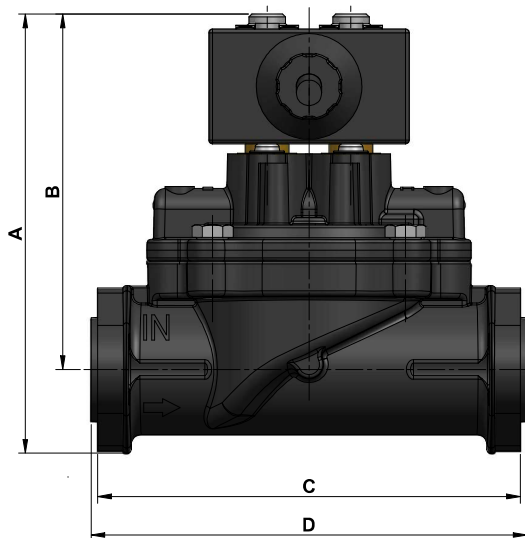
### 2way -2 stage solenoid valve

Model No.: IN 4110 F (DEF)



#### TECHNICAL SPECIFICATION :

Type	: 2 Way - 2 stage solenoid valve(NC)
Port size	: Flange Type
Period	: Continuous
Insulation class	: F
Working fluid pressure	: 0.35 bar to 3.5 bar
Body material	: Aluminium Ad Blue (DEF) Coating
Diaphragm	: FPM (Fluoroelastomer)
Orifice	: 2.5 mm / 25 mm
Operating voltage	: 230V AC / 24V DC / 12V DC
Wattage	: 2 x 6.9W (230V) & 2 x 6.25W (24V DC) & 2 x 6.8W (12V DC)
Fluid media	: Petrol / Diesel / Ad Blue (DEF)
Ambient temp.	: -40°C to + 65°C
Approvals	: ATEX, IECEX, PESO



Dimensions are in mm

Model No	Port Size	A	B	C	D	E	F
IN 4110 F (DEF)	Flange	119	97	116	119.7	81.2	54





## Solenoid valves for fuel dispensers

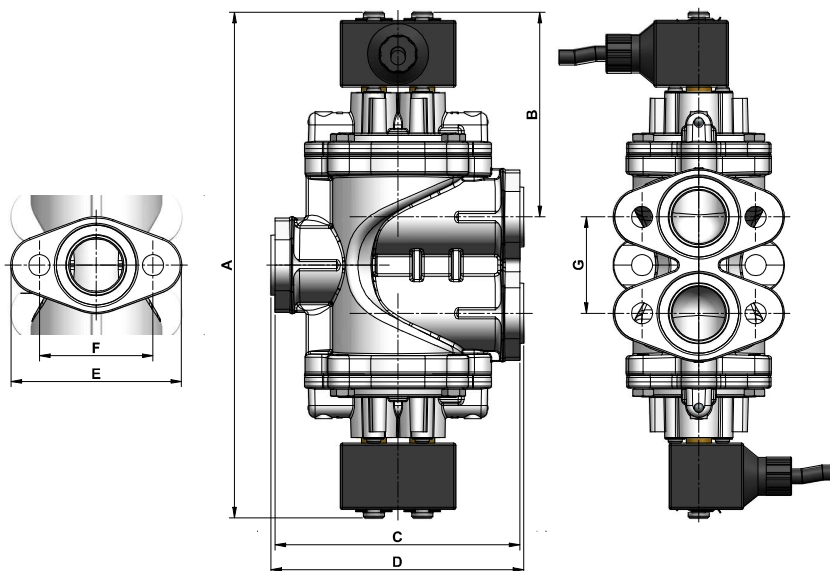
### 3 way -2 stage solenoid valve

Model No.: IN 4111 F



#### TECHNICAL SPECIFICATION :

Type	: 3 Way -2 stage solenoid valve(NC)
Port size	: Flange
Period	: Continuous
Insulation class	: F
Working fluid pressure	: 0.35 bar to 3.5 bar
Body material	: Aluminium
Diaphragm	: FPM (Fluoroelastomer)
Orifice	: 2.5 mm / 25 mm
Operating voltage	: 230V AC / 24V DC / 12V DC
Wattage	: 2. x 6.9W (230V) & 2 x 6.25W (24V DC) & 2 x 6.8W (12V DC)
Fluid media	: Petrol / Diesel
Ambient temp.	: -40°C to +65°C
Approvals	: ATEX, IECEX, PESO



Dimensions are in mm

Model No	Port Size	A	B	C	D	E	F	G
IN 4111 F	Flange	239.8	97	117	120.7	81.2	54	45.8



## Solenoid valves for fuel dispensers

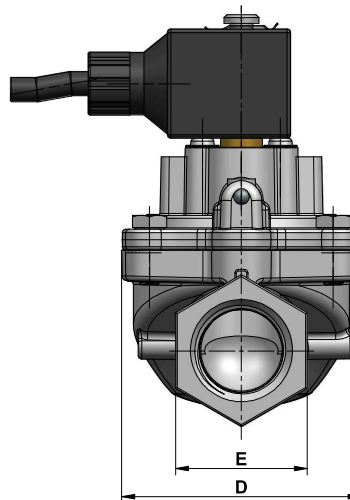
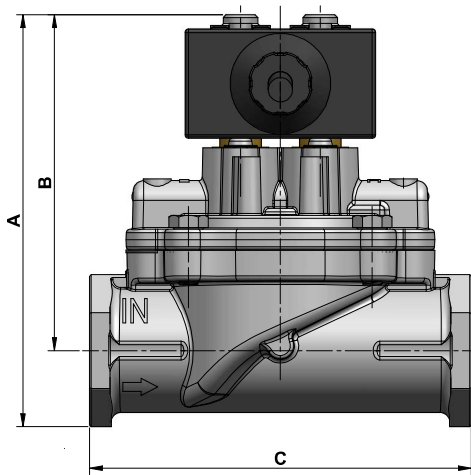
### 2way -2 stage solenoid valve

Model No.: IN 4150 F



#### TECHNICAL SPECIFICATION :

Type	: 2 Way - 2 stage solenoid valve(NC)
Port size	: ¾" & 1" BSP / NPT
Period	: Continuous
Insulation class	: F
Working fluid pressure	: 0.35 bar to 3.5 bar
Body material	: Aluminium
Diaphragm	: FPM (Fluoroelastomer)
Orifice	: 2.5 mm / 25 mm
Operating voltage	: 230V AC / 24V DC / 12V DC
Wattage	: 2. x 6.9W (230V) & 2 x 6.25W (24V DC) & 2 x 6.8W (12V DC)
Fluid media	: Petrol / Diesel
Ambient temp.	: -40°C to + 65°C
Approvals	: ATEX, IECEX, PESO



Dimensions are in mm

Model No	Port Size (Inch)	A	B	C	D	E
IN 4150 F	¾" & 1" BSP	119	97	110	69	38



## Solenoid valves for Ad Blue (DEF) dispensers

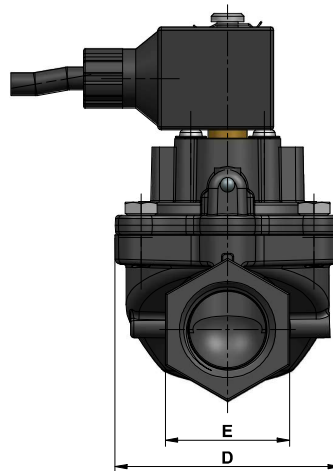
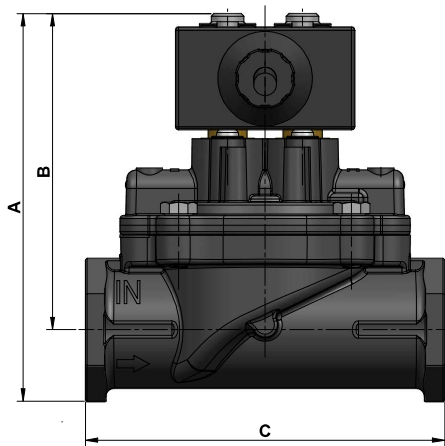
### 2way -2 stage solenoid valve

Model No.: IN 4150 F (DEF)



#### TECHNICAL SPECIFICATION :

Type	: 2 Way - 2 stage solenoid valve(NC)
Port size	: 3/4" & 1" BSP / NPT
Period	: Continuous
Insulation class	: F
Working fluid pressure	: 0.35 bar to 3.5 bar
Body material	: Aluminium Ad Blue (DEF) Coating
Diaphragm	: FPM (Fluoroelastomer)
Orifice	: 2.5 mm / 25 mm
Operating voltage	: 230V AC / 24V DC / 12V DC
Wattage	: 2. x 6.9W (230V) & 2 x 6.25W (24V DC) & 2 x 6.8W (12V DC)
Fluid media	: Petrol / Diesel / Ad Blue (DEF)
Ambient temp.	: -40°C to + 65°C
Approvals	: ATEX, IECEX, PESO



Dimensions are in mm

Model No	Port Size (Inch)	A	B	C	D	E
IN 4150 F (DEF)	3/4"BSP/NPT	119	97	110	69	38



## Solenoid valves for Ad Blue (SS) dispensers

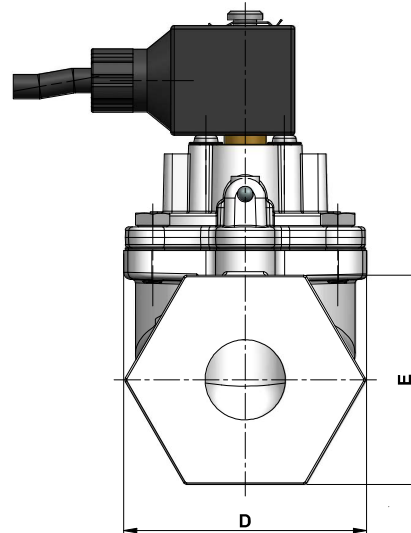
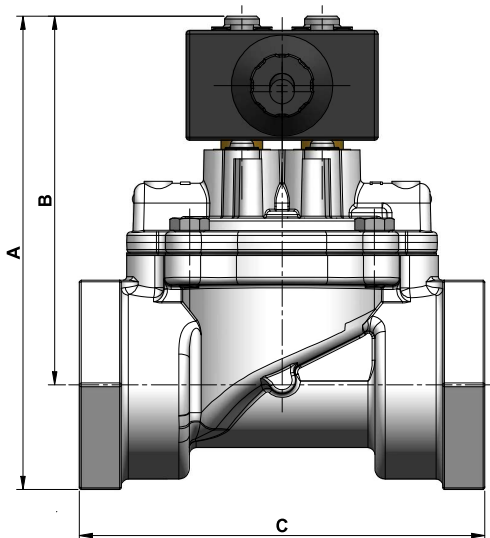
### 2way -2 stage solenoid valve

Model No.: IN 4150 F SS



#### TECHNICAL SPECIFICATION :

Type	: 2 Way - 2 stage solenoid valve(NC)
Port size	: ¾" & 1" BSP / NPT
Period	: Continuous
Insulation class	: F
Working fluid pressure	: 0.35 bar to 3.5 bar
Body material	: Stainless Steel 304
Diaphragm	: FPM (Fluoroelastomer)
Orifice	: 2.5 mm / 25 mm
Operating voltage	: 230V AC / 24V DC / 12V DC
Wattage	: 2. x 6.9W (230V) & 2 x 6.25W (24V DC) & 2 x 6.8W (12V DC)
Fluid media	: Petrol / Diesel / Ad Blue (SS)
Ambient temp.	: -40°C to + 65°C
Approvals	: ATEX, IECEX, PESO



Dimensions are in mm

Model No	Port Size (Inch)	A	B	C	D	E
IN 4150 F SS	¾" BSP/NPT	134	104	116.2	69	60



## Solenoid Valve 24V DC for Ad Blue (DEF) dispensers

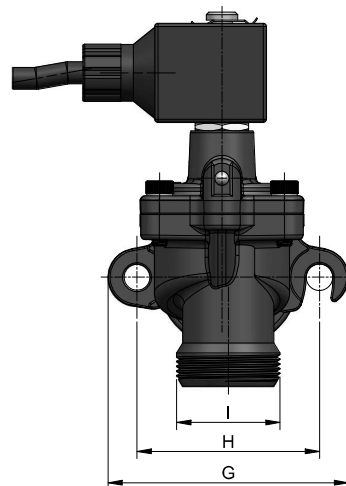
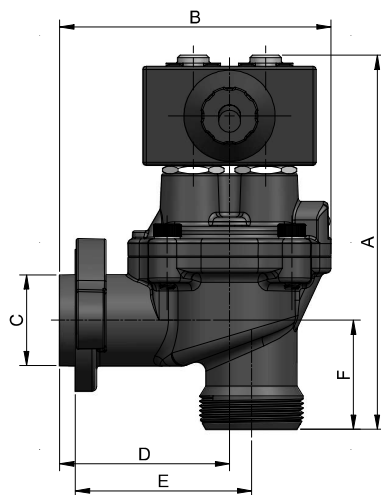
### 2way -2 stage solenoid valve

Model No.: IN 4150 FT (DEF)



#### TECHNICAL SPECIFICATION :

Type	: 2 Way - 2 stage solenoid valve(NC)
Port size	: 1" BSP / BSPT / NPT
Period	: Continuous
Insulation class	: F
Working fluid pressure	: 0.35 bar to 3.5 bar
Body material	: Aluminium Ad Blue (DEF) Coating
Diaphragm	: FPM (Fluoroelastomer)
Orifice	: 2.5 mm / 25 mm
Operating voltage	: 230V AC / 24V DC / 12V DC
Wattage	: 2. x 6.9W (230V) & 2 x 6.25W (24V DC) & 2 x 6.8W (12V DC)
Fluid media	: Petrol / Diesel / Ad Blue (DEF)
Ambient temp.	: -40°C to + 65°C
Approvals	: ATEX, IECEX, PESO



Dimensions are in mm

Model No	Port Size (Inch)	A	B	C	D	E	F	G	H
IN 4150 FT	1" BSP/ BSPT/ NPT	119	86.3	29.0	54	56	35	76.5	58.0



## Solenoid Valve 24V DC for Ad Blue dispensers

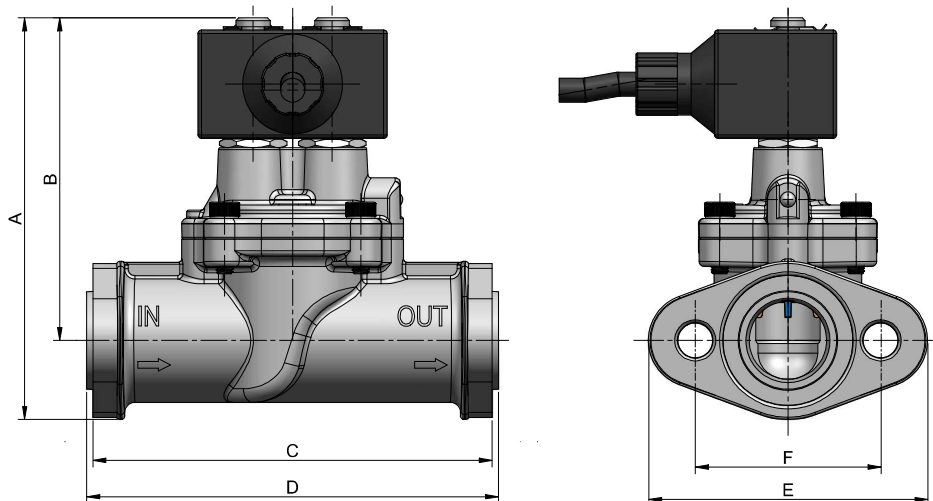
### Piston Type Solenoid Valve

Model No.: IN 4150 FP



#### TECHNICAL SPECIFICATION :

Type	: 2 Way - 2 stage solenoid valve(NC)
Port size	: Flange Type
Period	: Continuous
Insulation class	: F
Working fluid pressure	: 0.35 bar to 3.5 bar
Body material	: Aluminium
Diaphragm	: FPM (Fluoroelastomer)
Orifice	: 2.5 mm / 25 mm
Operating voltage	: 230V AC / 24V DC / 12V DC
Wattage	: 2. x 6.9W (230V) & 2 x 6.25W (24V DC) & 2 x 6.8W (12V DC)
Fluid media	: Petrol / Diesel / Ad Blue
Ambient temp.	: -40°C to + 65°C
Approvals	: ATEX, IECEX, PESO



Dimensions are in mm

Model No	Port Size	A	B	C	D	E	F
IN 4110 FP	Flange	116	94	116	119.7	81.2	54



## Solenoid valves for fuel dispensers

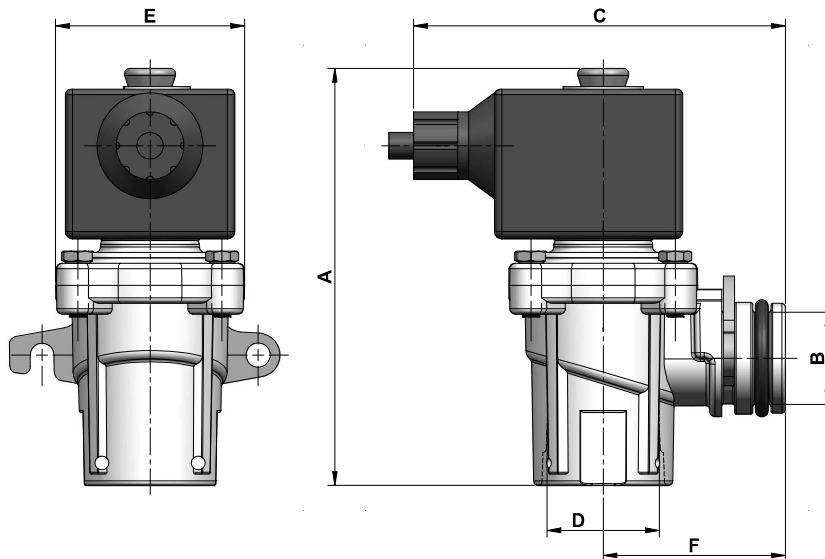
### Proportional Solenoid valve

**Model No.: IN 4370 F**



#### TECHNICAL SPECIFICATION :

Type	: 2 Way proportional solenoid valve (NC)
Port size	: Seal fitting
Period	: Continuous
Insulation class	: F
Working fluid pressure	: 0.35 bar to 3.5 bar
Body material	: Aluminium
Diaphragm	: PTFE
Orifice	: 20mm
Operating voltage	: 230V AC & 24V DC & 12V DC.
Wattage	: 9W (230V AC ) & 7W (24V DC) & 5.2W (12V DC).
Fluid media	: Petrol / Diesel / Gasoline
Ambient temp.	: -40°C to + 60°C
Approvals	: ATEX, IECEx, PESO



Dimensions are in mm

Model No	Port Size	A	B	C	D	E	F
IN 4370 F	Seal Fit	114.7	25.3	102.2	31	51.8	50.4



## Solenoid valves for Ad Blue (DEF) fuel dispensers

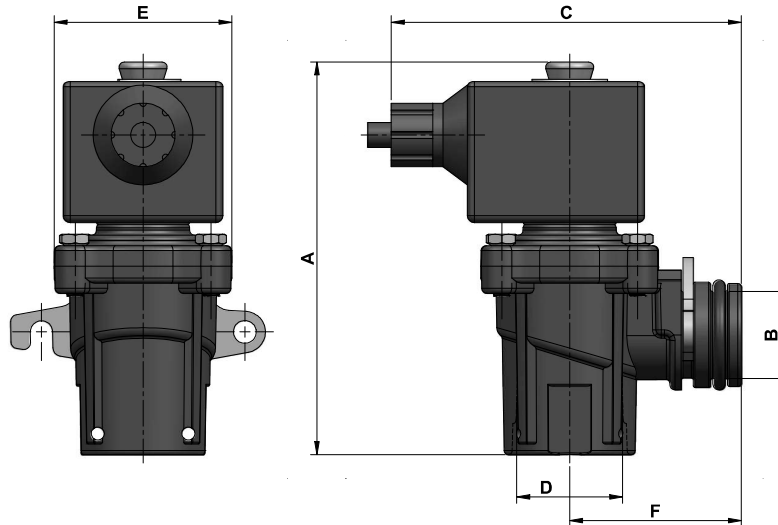
### Proportional Solenoid valve

Model No.: IN 4370 F (DEF)



#### TECHNICAL SPECIFICATION :

Type	: 2 Way proportional solenoid valve (NC)
Port size	: Seal fitting
Period	: Continuous
Insulation class	: F
Working fluid pressure	: 0.35 bar to 3.5 bar
Body material	: Aluminium Ad Blue (DEF) Coating
Diaphragm	: PTFE
Orifice	: 20mm
Operating voltage	: 230V AC & 24V DC & 12V DC.
Wattage	: 9W (230V AC ) & 7W (24V DC) & 5.2W (12V DC)
Fluid media	: Petrol / Diesel / Gasoline / Ad Blue (DEF)
Ambient temp.	: -40°C to + 60°C
Approvals	: ATEX, IECEx, PESO



Dimensions are in mm

Model No	Port Size	A	B	C	D	E	F
IN 4370 F (DEF)	Seal Fit	114.7	25.3	102.2	31	51.8	50.4





## Solenoid valves for fuel dispensers

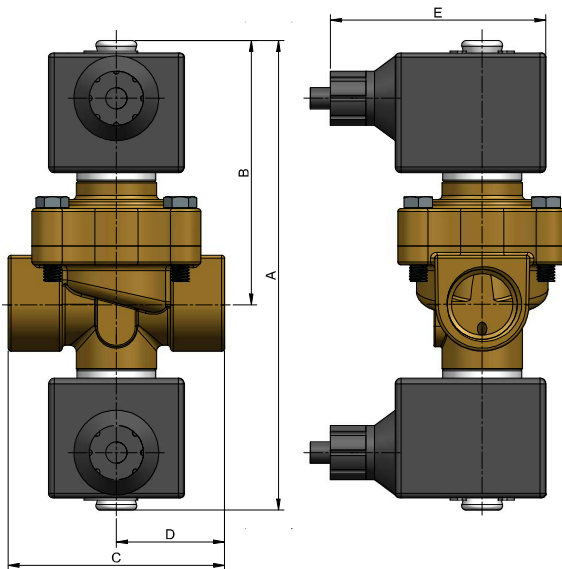
### 2 way 2 stage solenoid valve for LPG

Model No.: IN 3350 F



#### TECHNICAL SPECIFICATION :

Type	: 2 way - 2 stage solenoid valve (NC)
Port size	: 3/4" & 1" BSP / NPT
Period	: Continuous
Insulation class	: F
Working fluid pressure	: 0 bar to 25 bar (AC) 0 bar to 17 bar (DC)
Body Material	: Brass
Diaphragm	: PTFE
Orifice	: 2.4 mm / 19 mm
Operating Voltage	: 230V AC & 24V DC & 12V DC.
Wattage	: 9 W (230V AC ) & 7W (24V DC) & 5.2W (12V DC)
Fluid Media	: LPG Gas/ Liquid
Ambient temp.	: -40°C to + 60°C
Approvals	: ATEX, IECEX, PESO



Dimensions are in mm

Model No	Port Size (Inch)	A	B	C	D	E
IN 3350 F	3/4" BSP / NPT	161	90	74	37	73.5



## Solenoid valves for fuel dispensers

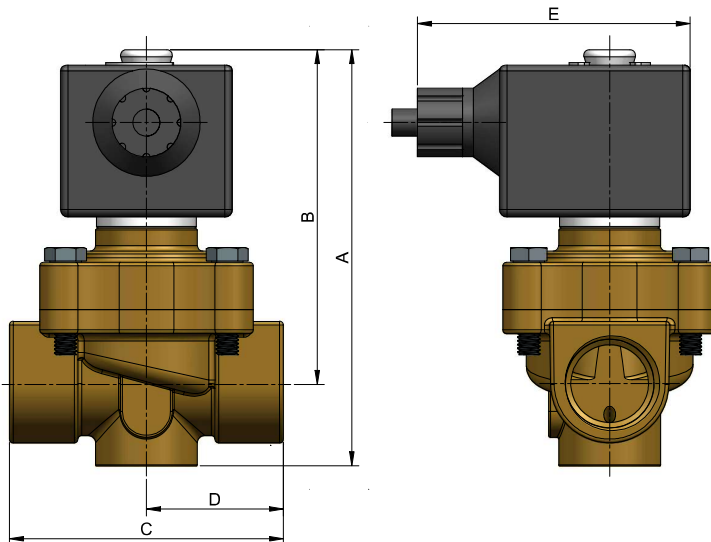
### 2 way single stage coil solenoid valve for LPG

**Model No.: IN 3350 F S**



**TECHNICAL SPECIFICATION :**

Type	: 2 way - 2 stage solenoid valve (NC)
Port size	: 3/4" BSP / NPT
Period	: Continuous
Insulation class	: F
Working fluid pressure	: 0 bar to 25 bar (AC) 0 bar to 17 bar (DC)
Body Material	: Brass
Diaphragm	: PTFE
Orifice	: 2.4 mm / 19 mm
Operating Voltage	: 230V AC & 24V DC & 12V DC.
Wattage	: 9 W (230V AC ) & 7W (24V DC) & 5.2W (12V DC)
Fluid Media	: LPG Gas/ Liquid
Ambient temp.	: -40°C to + 60°C
Approvals	: ATEX, IECEX, PESO



Dimensions are in mm

Model No	Port Size (Inch)	A	B	C	D	E
IN 3350 F S	3/4" BSP / NPT	115	90	74	37	73.5



## Pilot Operated High-Pressure Solenoid Valves Compressed Natural Gas Valves

Model No.: IN 1002H



### Features :

- Rugged stainless steel valve with piston design built to withstand pressure ratings over 5,000 psi
- High flow design for fast CNG dispensing, reduces vehicle fill time
- Ambient temperature range -22 $\phi$ <sup>a</sup>F to 140 $\phi$ <sup>a</sup>F (-30 $\phi$ <sup>a</sup>C to 60 $\phi$ <sup>a</sup>C)
- PEEK piston provides tight sealing and durable operation
- Suitable for use in Class I, Div. 1 hazardous locations
- Mountable in any position

### Construction :

Valve parts in Contact with Fluids	
Body	303 Stainless Steel
Core Tube	303 Stainless Steel
Piston	PEEK
Core and Plugnut	430F Stainless Steel
Springs	304 Stainless Steel
Sealing (U-cup)	PTFE/302 Stainless Steel
Seals	FKM

### Electrical

Standard Coil and Class of Insulation	Watt Rating and Power Consumption				Spare Coil Part Number	
	DC Watts	AC			Explosion proof	
		Watts	VA Holding	VA Inrush	AC	DC
F	11.6	12	12	12	001	002

Standard Voltages: 24/50-60, 230/50-60 volts AC, or 24 volts DC.

### Specifications (English units)

Pipe Size (in)	Orifice Size (in)	Operating Pressure Differential (psi)		Max. Fluid Temp. °F	Const. Ref.	Watt Rating/ Class of Coil Insulation	
		Compressed Natural Gas				AC	DC
		Min.	Max.				
3/8	5/16	145	5,070	140	1	12.0/F	11.6/F
1/2	15/32	145	5,070	140	2	12.0/F	11.6/F
1	45/64	145	5,070	140	3	12.0/F	11.6/F

- ISO 228 thread.

### Specifications (Metric units)

Pipe Size (in)	Orifice Size (mm)	Operating Pressure Differential (bar)		Max. Fluid Temp. °C	Const. Ref.	Watt Rating/ Class of Coil Insulation	
		Compressed Natural Gas				AC	DC
		Min.	Max.				
3/8	8	10	350	60	1	12.0/F	11.6/F
1/2	12	10	350	60	2	12.0/F	11.6/F
1	18	10	350	60	3	12.0/F	11.6/F

- ISO 228 thread.

# INSV series of Emergency Shut-off Valves



**Shear Valves  
for Fuel Dispensers**

---



## INSV series of Emergency Shut-off Valves

### Shear valve

**Model No.: AT/SM/SV/ASSY/01 & AT/SM/SV/ASSY/02**

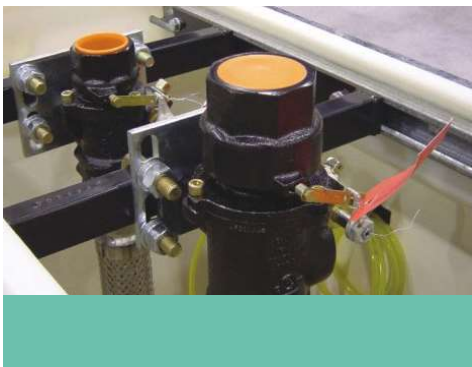


#### Materials :

Body : Gray Iron  
Seal : Viton  
Carrier : Zink - Plate Steel  
Medium : Water, Gasoline, Diesel and Kerosene  
Poppet Spring : Stainless Steel  
Disc : Viton  
Packing Nut : Brass, Teflon-coated  
Operating Environment : -25°C ~ + 65°C

#### Package :

Net Weight : 2.750 Kg /pc  
Gross Weight : 3 Kg/pc  
254 x 254 x 380 mm 8 pc



Infinity INSV Series Emergency Shut-off Valves are installed on fuel supply lines beneath at grade level to minimize hazards associated with collision or fire at the dispenser. If the dispenser is pulled over or dislodged by collision, the top of the valve brakes of the flow of fuel. Single -poppet models shut off supply flow, while double-poppet models shut off supply as well as prevent release of fuel from the dispenser's internal piping. The base of the Emergency Valve is securely anchored to the concrete dispenser island through a stabilizer bar system within a U-Bolt Assembly Valve inlet (bottom) connection are female pipe threads and outlet (top) connections are available with female threads male threads, or a union fitting. Other options include suction system models with a normally closed secondary poppet which maintain prime, and models with external threads on inlet body which connect to secondary containment system.

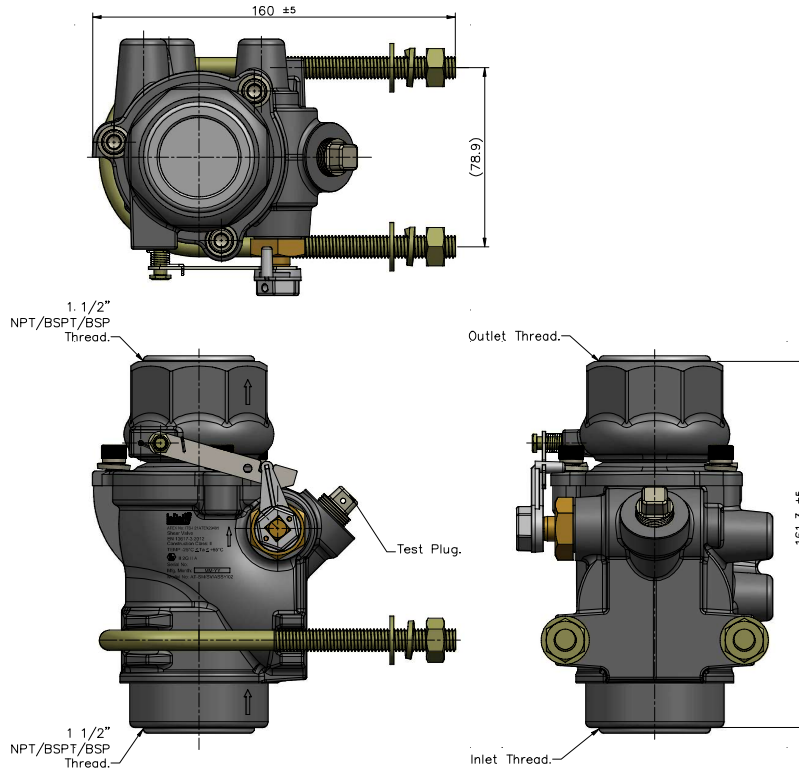
#### Features & Benefits :

- **Shear Force:** 300 NM - 880 NM
- **Fire Protection:** A fusible link trips the valve closed at 76°C to shut off fuel supply to the dispense.
- **Integral Test Port:** A 3/8" Test Port allows the piping system to be air tested without breaking any piping connection.
- **Low - Profile Tops:** Female and Union-top Double-poppet valves have a low - profile top to allow upgrading from Infinity Single-poppet Valves without changing existing piping.
- **Multiple Mounting Option:** Valves are boss-mounted to stabilizer bars in sump and pans or mounted to bars embedded in the island with U-Bolt kits. Versatile Combination Body (Boss mount / U-Bolt mount) models are available to accommodate most mounting applications with one valve style.
- **100% Factory Tested.**



## Shear valve

Model No.: AT/SM/SV/ASSY/01 & AT/SM/SV/ASSY/02



### Ordering Specifications :

Model No	Inlet	Outlet	PC
SV-01 01	BSPT 1.5" (Female)	BSPT 1.5" (Female)	Single
SV-02 02	BSPT 1.5" (Female)	BSPT 1.5" (Female)	Double
SV-01 03	BSP 1.5" (Female)	BSP 1.5" (Female)	Single
SV-02 04	BSP 1.5" (Female)	BSP 1.5" (Female)	Double
SV-01 05	NPT 1.5" (Female)	NPT 1.5" (Female)	Single
SV-02 06	NPT 1.5" (Female)	NPT 1.5" (Female)	Double

Infinity Products should be used in compliance with country, province and local Laws and regulations. Products selection should be based on physical specification and limitations and compatibility with the environment and materials to be handled. Infinity makes no warranty of fitness for a particular use, All illustrations and specifications in this literature are based on the latest products information available at the time of publication, Infinity reserves the right to make changes at any time in price, materials, specifications and models and to discontinue models without or obligation.

Listing and ATEX Certifications No:

**ITS-I21ATEX29495**



## INSV series of Emergency Shut-off Valves Ad Blue (DEF) Shear valve

**Model No.: AT/SM/SV/ASSY/01 SS & AT/SM/SV/ASSY/02 SS**

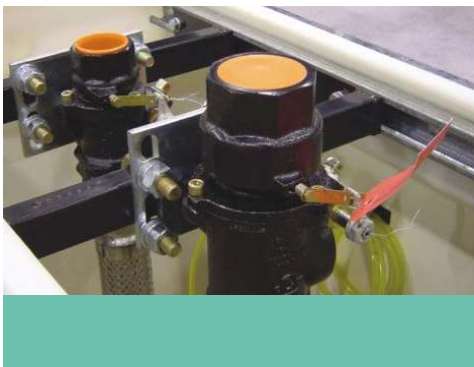


### **Materials :**

Body : SS-304  
Seal : Viton  
Carrier : Zink - Plate Steel  
Medium : Water, Gasoline, Diesel, Kerosene & DEF  
Poppet Spring : Stainless Steel  
Disc : Viton  
Packing Nut : SS-304  
Operating Environment : -25°C ~ + 65°C

### **Package :**

Net Weight : 2.750 Kg /pc  
Gross Weight : 3 Kg/pc  
254 x 254 x 380 mm 8 pc



Infinity INSV Series Emergency Shut-off Valves are installed on fuel supply lines beneath at grade level to minimize hazards associated with collision or fire at the dispenser. If the dispenser is pulled over or dislodged by collision, the top of the valve brakes of the flow of fuel. Single -poppet models shut off supply flow, while double-poppet models shut off supply as well as prevent release of fuel from the dispenser's internal piping. The base of the Emergency Valve is securely anchored to the concrete dispenser island through a stabilizer bar system within a U-Bolt Assembly Valve inlet (bottom) connection are female pipe threads and outlet (top) connections are available with female threads male threads, or a union fitting. Other options include suction system models with a normally closed secondary poppet which maintain prime, and models with external threads on inlet body which connect to secondary containment system.

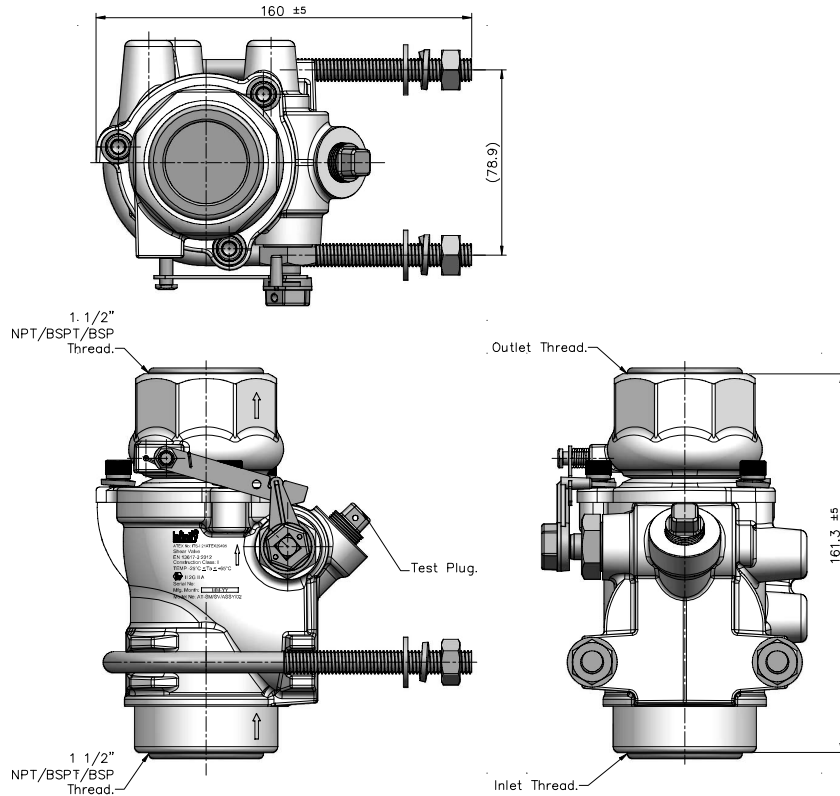
### **Features & Benefits :**

- **Shear Force:** 300 NM - 880 NM
- **Fire Protection:** A fusible link trips the valve closed at 76°C to shut off fuel supply to the dispense.
- **Integral Test Port:** A 3/8" Test Port allows the piping system to be air tested without breaking any piping connection.
- **Low - Profile Tops:** Female and Union-top Double-poppet valves have a low - profile top to allow upgrading from Infinity Single-poppet Valves without changing existing piping.
- **Multiple Mounting Option:** Valves are boss-mounted to stabilizer bars in sump and pans or mounted to bars embedded in the island with U-Bolt kits. Versatile Combination Body (Boss mount / U-Bolt mount) models are available to accommodate most mounting applications with one valve style.
- **100% Factory Tested.**



## Shear valve

Model No.: AT/SM/SV/ASSY/01 SS & AT/SM/SV/ASSY/02 SS



### Ordering Specifications :

Model No	Inlet	Outlet	PC
SV-01 01 SS	BSPT 1.5" (Female)	BSPT 1.5" (Female)	Single
SV-02 02 SS	BSPT 1.5" (Female)	BSPT 1.5" (Female)	Double
SV-01 03 SS	BSP 1.5" (Female)	BSP 1.5" (Female)	Single
SV-02 04 SS	BSP 1.5" (Female)	BSP 1.5" (Female)	Double
SV-01 05 SS	NPT 1.5" (Female)	NPT 1.5" (Female)	Single
SV-02 06 SS	NPT 1.5" (Female)	NPT 1.5" (Female)	Double

Infinity Products should be used in compliance with country, province and local Laws and regulations. Products selection should be based on physical specification and limitations and compatibility with the environment and materials to be handled. Infinity makes no warranty of fitness for a particular use, All illustrations and specifications in this literature are based on the latest products information available at the time of publication, Infinity reserves the right to make changes at any time in price, materials, specifications and models and to discontinue models without or obligation.

Listing and ATEX Certifications No:

**ITS-I21ATEX29495**





## INSV series of Emergency Shut-off Valves

### Shear valve Union Type

**Model No.: AT/SM/SV/ASSY/01 U & AT/SM/SV/ASSY/02 U**



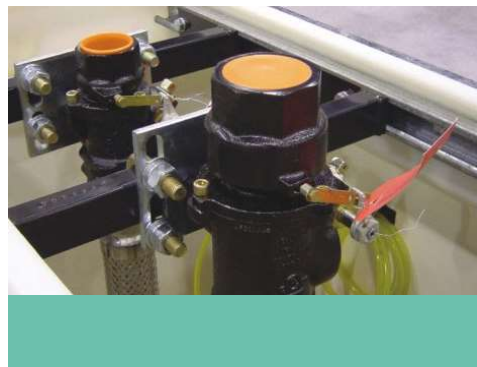
LISTED  
FOR UP TO  
**85%**  
ETHANOL

#### Materials :

Body : Gray Iron  
Seal : Viton  
Carrier : Zink - Plate Steel  
Medium : Water, Gasoline, Diesel and Kerosene  
Poppet Spring : Stainless Steel  
Disc : Viton  
Packing Nut : Brass, Teflon-coated  
Operating Environment : -25°C ~ + 65°C

#### Package :

Net Weight : 2.750 Kg /pc  
Gross Weight : 3 Kg/pc  
254 x 254 x 380 mm 8 pc



Infinity INSV Series Emergency Shut-off Valves are installed on fuel supply lines beneath at grade level to minimize hazards associated with collision or fire at the dispenser. If the dispenser is pulled over or dislodged by collision, the top of the valve brakes of the flow of fuel. Single -poppet models shut off supply flow, while double-poppet models shut off supply as well as prevent release of fuel from the dispenser's internal piping. The base of the Emergency Valve is securely anchored to the concrete dispenser island through a stabilizer bar system within a U-Bolt Assembly Valve inlet (bottom) connection are female pipe threads and outlet (top) connections are available with female threads male threads, or a union fitting. Other options include suction system models with a normally closed secondary poppet which maintain prime, and models with external threads on inlet body which connect to secondary containment system.

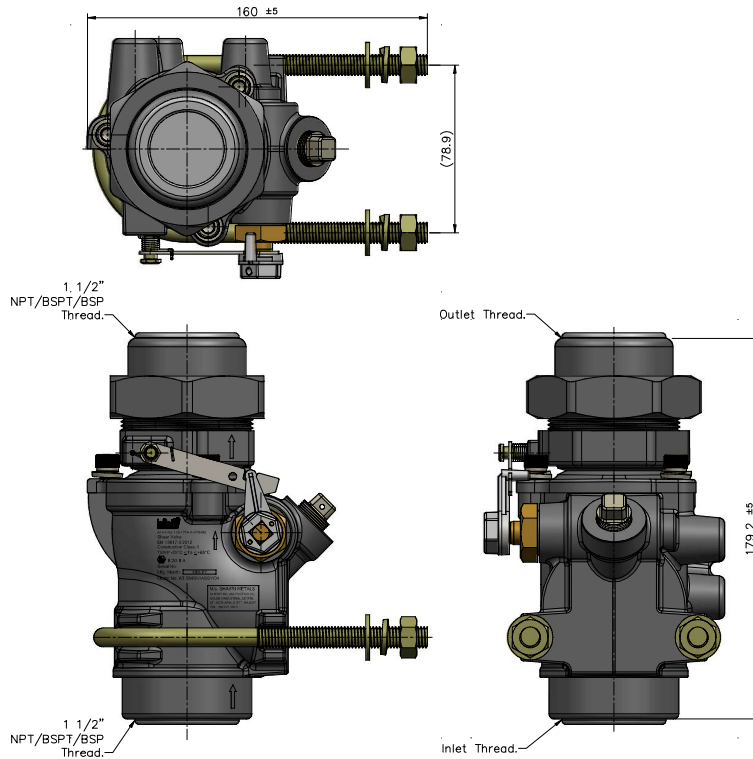
#### Features & Benefits :

- **Shear Force:** 300 NM - 880 NM
- **Fire Protection:** A fusible link trips the valve closed at 76°C to shut off fuel supply to the dispense.
- **Integral Test Port:** A 3/8" Test Port allows the piping system to be air tested without breaking any piping connection.
- **Low - Profile Tops:** Female and Union-top Double-poppet valves have a low - profile top to allow upgrading from Infinity Single-poppet Valves without changing existing piping.
- **Multiple Mounting Option:** Valves are boss-mounted to stabilizer bars in sump and pans or mounted to bars embedded in the island with U-Bolt kits. Versatile Combination Body (Boss mount / U-Bolt mount) models are available to accommodate most mounting applications with one valve style.
- **100% Factory Tested.**



## Shear valve Union Type

Model No.: AT/SM/SV/ASSY/01 U & AT/SM/SV/ASSY/02 U



### Ordering Specifications :

Model No	Inlet	Outlet	PC
SV-01 01 U	BSPT 1.5" (Female)	BSPT 1.5" (Female)	Single with Union
SV-02 02 U	BSPT 1.5" (Female)	BSPT 1.5" (Female)	Double with Union
SV-01 03 U	BSP 1.5" (Female)	BSP 1.5" (Female)	Single with Union
SV-02 04 U	BSP 1.5" (Female)	BSP 1.5" (Female)	Double with Union
SV-01 05 U	NPT 1.5" (Female)	NPT 1.5" (Female)	Single with Union
SV-02 06 U	NPT 1.5" (Female)	NPT 1.5" (Female)	Double with Union

Infinity Products should be used in compliance with country, province and local Laws and regulations. Products selection should be based on physical specification and limitations and compatibility with the environment and materials to be handled. Infinity makes no warranty of fitness for a particular use, All illustrations and specifications in this literature are based on the latest products information available at the time of publication, Infinity reserves the right to make changes at any time in price, materials, specifications and models and to discontinue models without or obligation.

Listing and ATEX Certifications No:

**ITS-I21ATEX29495**

# Accessories



**Break aways**

---

**Sight flow indicators**

---

**Swivels**

---



## infinity Vapour Recovery Breakaway Valves for Dispensing System Breakaway Valves

**Model No.: VRB-109 & VRB-110**



Infinity Vapour recovery breakaway valves ensure proper drive-off protection for vapour recovery refueling applications. Their lightweight, compact design allow for easy installation directly between the nozzle and hose.

### TECHNICAL SPECIFICATION :

Nozzle flow rate compatibility	: Up to 80 lpm
Working pressures compatibility	: 0.5 bar up to 3.5 bar
Separation force	: Between 800 N and 1,500 N force
For use with motor fuels including	: Gasoline, gasoline with up to 20% ethanol, diesel fuel
Temperature rating	: -30 °C to 65 °C
Fuel release	: < 10 ml after separation
Internal pressure	: BAV factory tested to 5.3 bar, SG factory tested to 3.5 bar
Electric conductivity	: Factory tested to < 100k Ohm

### HIGHLIGHT :

- Installs directly between the hose and nozzle.
- Compatible with high hose and retractor applications.
- Heat-treated aluminium or stainless steel construction.
- Separate with axial or up to 30° angular force.
- All rubber-to-machined metal connections ensure optimal sealing surfaces.
- Non-reusable design prevents unauthorised reconnection of breakaways by unqualified personnel or end user.
- Multiple models and thread size options available to accommodate the needs of any application.
- Clearly marked flow direction ensures proper installation.
- Easily installed without specialised tools. Simply mount the break away valve or directly into the nozzle and tighten using a torque wrench to 30 Nm.

### Approvals/Certifications

ATEX approved.



### Ordering Information

Model No	Inlet Connection (HS)	Outlet Connection (NS)	Description
VRB-109	M34x1.5 female coaxial	M34x1.5 male coaxial	Vapour recovery breakaway valve with aluminum
VRB-110	M34x1.5 female	M34x1.5 male coaxial	Vapour recovery breakaway valve with stainless steel



## Accessories

### Safety Breakaway Coupling Nozzle Break Re-usable

3/4" & M28 Standard & 1" & M34 Standard



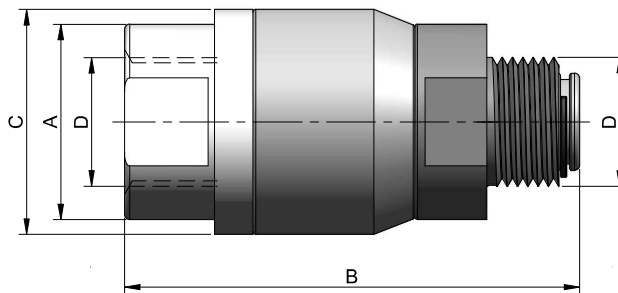
#### TECHNICAL SPECIFICATION :

Type	: 2 way (NO)
Size	: 3/4" NPT/M28 & 1" BSP/M34
Body material	: Aluminium & SS
O rings & Seals	: FPM (Fluoroelastomer)
Fluid media	: Petrol / Diesel
Approvals	: Atex

#### FEATURES :

**Infinity** Safety Breakaway Coupling Nozzle Break Re-usable allows for immediate return to service after a drive away with no repair kit required.

This is made possible by a unique reconnectable design. The single poppets seal both hoses upon separation.



Model No	Port Size (Inch)	Type	A	B	C	D	Weight	Max. Separation Pull Force
						(Inch / mm)		
NOZ-IN 56095	3/4" NPT	Safety Breakaway Coupling Nozzle	38	89	44	3/4"	0.335 lbs	350 LBS
NOZ-IN 56015	M28	Safety Breakaway Coupling Nozzle	38	89	44	M28	0.340 lbs	350 LBS
NOZ-IN 56085	1" BSP	Safety Breakaway Coupling Nozzle	44	89	44	1"	0.330 lbs	350 LBS
NOZ-IN 56105	M34	Safety Breakaway Coupling Nozzle	44	89	44	M34	0.350 lbs	350 LBS



## Accessories

### Safety Breakway Coupling Nozzle Break Re-usable Ad Blue (DEF)

3/4" & M28 Standard & 1" & M34 Standard



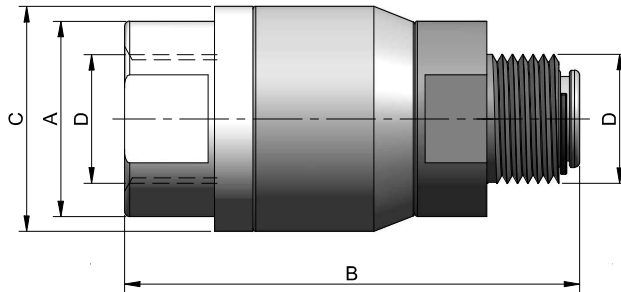
#### TECHNICAL SPECIFICATION :

Type	: 2 way (NO)
Size	: 3/4" NPT/M28 & 1" BSP/M34
Body material	: Aluminium Ad Blue (DEF) Coating
O rings & Seals	: FPM (Fluoroelastomer)
Fluid media	: Petrol / Diesel
Approvals	: Atex

#### FEATURES :

**Infinity** Safety Breakaway Coupling Nozzle Break Re-usable allows for immediate return to service after a drive away with no repair kit required.

This is made possible by a unique reconnectable design. The single poppets seal both hoses upon separation.



Model No	Port Size (Inch)	Type	A	B	C	D (Inch / mm)	Weight	Max. Separation Pull Force
NOZ-IN 56095 (DEF)	3/4" NPT	Safety Breakaway Coupling Nozzle	38	89	44	3/4"	0.335 lbs	350 LBS
NOZ-IN 56015 (DEF)	M28	Safety Breakaway Coupling Nozzle	38	89	44	M28	0.340 lbs	350 LBS
NOZ-IN 56085 (DEF)	1" BSP	Safety Breakaway Coupling Nozzle	44	89	44	1"	0.330 lbs	350 LBS
NOZ-IN 56105 (DEF)	M34	Safety Breakaway Coupling Nozzle	44	89	44	M34	0.350 lbs	350 LBS



## Accessories

# Safety Breakaway Coupling Pump Break Re-usable

3/4" & M28 Standard & 1" & M34 Standard



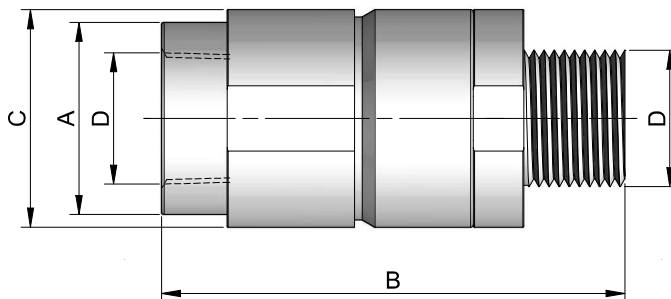
### TECHNICAL SPECIFICATION :

Type	: 2 way (NO)
Size	: 3/4" NPT/M28 & 1" BSP/M34
Body material	: Aluminium
O rings & Seals	: FPM (Fluoroelastomer)
Fluid media	: Petrol / Diesel
Approvals	: Atex

### FEATURES :

Infinity Safety Breakaway Coupling Pump Break Re-usable allows for immediate return to service after a drive away with no repair kit required.

This is made possible by a unique reconnectable design. The double poppets seal both hoses upon separation.



Model No	Port Size (Inch)	Type	A	B	C	D (Inch / mm)	Weight	Max. Separation Pull Force
PUMP-IN 56135	3/4" NPT	Safety Breakaway Coupling Pump	38	99	43	3/4"	0.335 lbs	350 LBS
PUMP-IN 56155	M28	Safety Breakaway Coupling Pump	38	78	43	M28	0.340 lbs	350 LBS
PUMP-IN 56125	1" BSP	Safety Breakaway Coupling Pump	38	99	43	1"	0.330 lbs	350 LBS
PUMP-IN 56145	M34	Safety Breakaway Coupling Pump	38	78	43	M34	0.350 lbs	350 LBS



## Break aways - 1" Standard

**Model No.: IN 4650 & 60 B - Non Reconnectable Break away &**

**Model No.: IN 4650 & 60 C - Reconnectable Break away**



### TECHNICAL SPECIFICATION :

Type	: 2 Way (NO)
Size	: 1" NPT / BSP
Body material	: Aluminium
O rings & Seals	: FPM (Fluoroelastomer)
Fluid media	: Petrol / Diesel
Approvals	: Atex

### FEATURES :

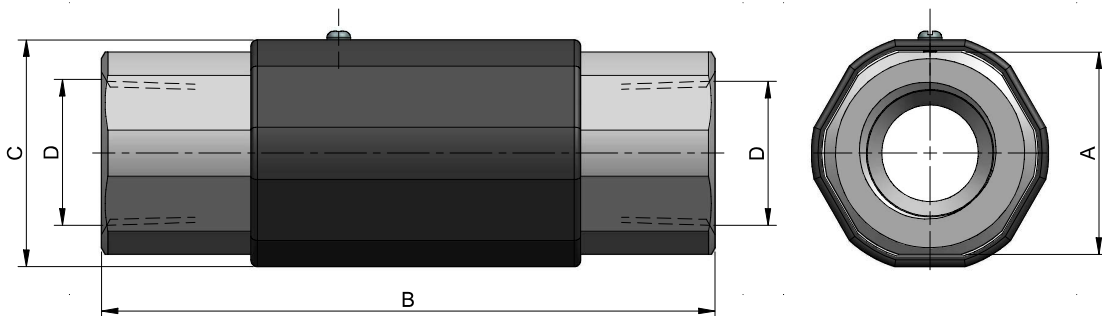
**Infinity** IN4650B & IN 4660 B Non Reconnectable Break away has economical design with 3/4" & 1" connection for standard hose application.

The double poppets seal both hoses upon separation.

**Infinity** IN4650C & IN4660 C Reconnectable Break away allows for immediate return to service after a drive away with no repair kit required.

This is made possible by a unique reconnectable design.

The double poppets seal both hoses upon separation.



Dimensions are in mm

Model No	Port Size (Inch)	Type	A	B	C	D (Inch)	Weight	Max. Separation Pull Force
IN 4650 B	3/4" NPT / BSP	Non Reconnectable	31.8	106.3	36.5	3/4"	0.4 lbs	350 LBS
IN 4650 C	3/4" NPT / BSP	Reconnectable	41.5	108.9	47	3/4"	0.8 lbs	350 LBS
IN 4660 B	1" NPT / BSP	Non Reconnectable	46	142.6	51.5	1"	0.8 lbs	350 LBS
IN 4660 C	1" NPT / BSP	Reconnectable	46	141.5	51.5	1"	1.0 lbs	350 LBS





## Break aways - 3/4" Standard

**Model No.: IN 4650 B - Non Reconnectable Break away &**

**Model No.: IN 4650 C - Reconnectable Break away**



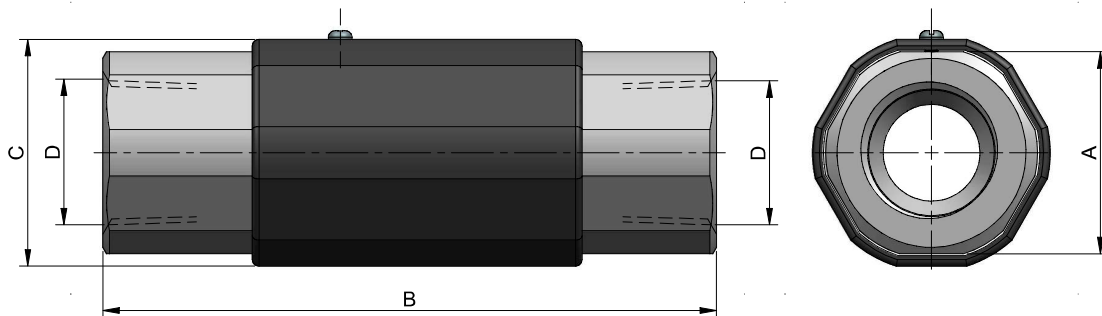
### TECHNICAL SPECIFICATION :

Type	: 2 way (NO)
Size	: 1" NPT / BSP
Body material	: Aluminium
O rings & Seals	: FPM (Fluoroelastomer)
Fluid media	: Petrol / Diesel
Approvals	: Atex

### FEATURES :

**Infinity** IN 4650 B Non Reconnectable Break away has economical design with 1" connection for standard hose application. The double poppets seal both hoses upon separation.

**Infinity** IN4650 C Reconnectable Break away allows for immediate return to service after a drive away with no repair kit required. This is made possible by a unique reconnectable design. The double poppets seal both hoses upon separation.



Dimensions are in mm

Model No	Port Size (Inch)	Type	A	B	C	D (inch)	Weight	Max. Separation Pull Force
IN 4650 B	3/4" NPT / BSP	Non Reconnectable	31.8	106.3	36.5	3/4"	0.4 lbs	350 LBS
IN 4650 C	3/4" NPT / BSP	Reconnectable	41.5	108.9	47	3/4"	0.8 lbs	350 LBS



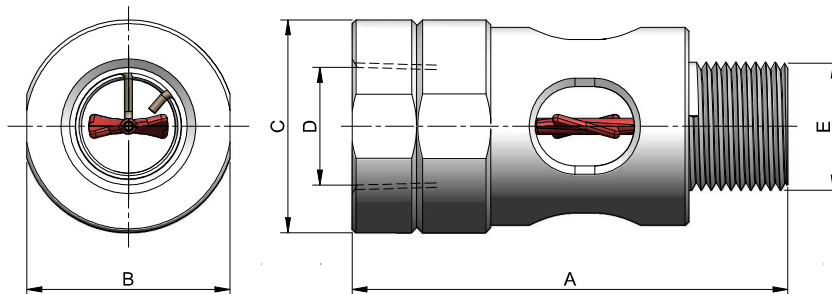
## Sight flow indicator

Model No.: IN 4650 A & IN 4660 A



### TECHNICAL SPECIFICATION :

Type	: 2 Way (NO)
Size	: 3/4" & 1" NPT / BSP
Body Material	: Aluminium
O rings & Seals	: FPM (Fluoroelastomer)
Fluid Media	: Petrol / Diesel



Dimensions are in mm

Model No	Port Size (Inch)	A	B	C	D (Inch)	E (Inch)
IN 4650 A	3/4" NPT/BSP	88	41	43	3/4"	3/4"
IN 4660 A	1" NPT/BSP	110	41	43	1"	1"



## InfinityAT-SM-SWL Series Materials

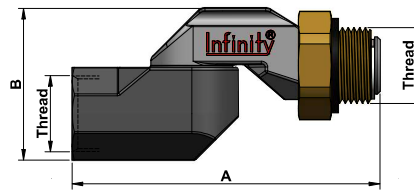
### Double Plane Swivels

Model No.: AT/SM/SWL DPS



LISTED FOR UP TO **85% ETHANOL**

The **Infinity AT-SM-SWL** Series of Double Plane Swivels are designed and rigorously tested for applications where easy nozzle and hose handling is important for customer convenience. Double Plane Swivels are installed between the nozzle and the hose to provide flexibility in the system to reduce customer strain, position the nozzle properly and reduce premature hose wear.



#### Materials :

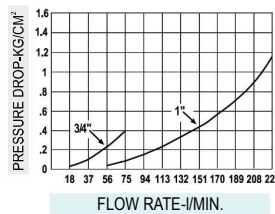
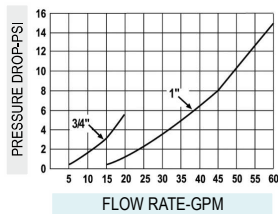
Body: Aluminum Inlet  
Adaptor: Zinc Outlet  
Adaptor: Zinc Flat  
Seal: Viton  
O-Ring: Viton  
Circlip: SS

#### Package :

Weight: 3/4"-(0.271 Kg)  
Weight: 1"/M34-(0.554 Kg)  
60 : Per Case

#### Features :

- ATEX listed for use in Petrol Diesel, Gasoline, and up to 25% ethanol blends. Specific listings available at [www.infinitycontrols.com](http://www.infinitycontrols.com)
- Allows for easy nozzle positioning in fill pipes-utilizing Double Plane Swivel.
- Reduces premature hose wear-utilizing Double Plane Swivels of rotation.
- Added protection vs. thermal and chemical degradation - Dual Seals.
- 50 psi (3.45 bar) maximum pressure.



Listings and Certifications



ATEX

#### Ordering Specifications :

Model No	Inlet / Out Let Thtrad	Length -A	Depth - B
INFI-SW-001	3/4"F x 3/4"M (NPT),(BSP),(BSPT)	4 1/4"	2 1/8"
	19 mm x 19 mm	107.6 mm	53.0 mm
INFI-SW-002	1" F x 1" M (NPT),(BSP),(BSPT)	5 1/4"	2 5/8"
	25 mm x 25 mm	130.2 mm	68.2 mm
	M34F x M34M	5 1/4"	2 5/8"
	34 mm x 34 mm	130.2 mm	68.2 mm

**INFI-SW-001** is ATEX Listed for up to 85% Ethanol and 20% Biodiesel.

**INFI-SW-002** is ATEX Listed for up to 85% Ethanol and 20% Biodiesel.



## SHAYRI METALS

**Regi. Office** : Plot No.: 63, Golden Industrial Area, Behind Rolex Industries, Near Shree Ram Way-bridge, Kothariya , Rajkot - 360004 (Gujarat) India.

**Works** : Survey No. 25P/P1/P2 , NH - 27, Nr. Orson Technocast, Opp. Ramdev Hotel, Village : Bharudi, Dist.: Rajkot - 360 311 (Gujarat) India.

**Cell** : +91 937 410 5381

**Email** : [jayeshpatel@infinitycontrols.com](mailto:jayeshpatel@infinitycontrols.com)

**Website** : [www.infinitycontrols.com](http://www.infinitycontrols.com)