



Accessories

Safety Breakaway Coupling Pump Break Re-usable

3/4" & M28 Standard & 1" & M34 Standard



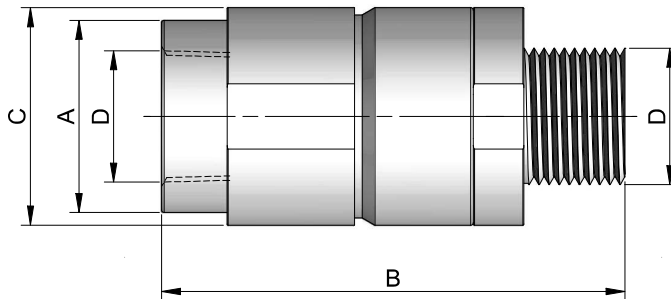
TECHNICAL SPECIFICATION :

Type	: 2 way (NO)
Size	: 3/4" NPT/M28 & 1" BSP/M34
Body material	: Aluminium
O rings & Seals	: FPM (Fluoroelastomer)
Fluid media	: Petrol / Diesel
Approvals	: Atex

FEATURES :

Infinity Safety Breakaway Coupling Pump Break Re-usable allows for immediate return to service after a drive away with no repair kit required.

This is made possible by a unique reconnectable design. The double poppets seal both hoses upon separation.



Model No	Port Size (Inch)	Type	A	B	C	D (Inch / mm)	Weight	Max. Separation Pull Force
PUMP-IN 56135	3/4" NPT	Safety Breakaway Coupling Pump	38	99	43	3/4"	0.335 lbs	350 LBS
PUMP-IN 56155	M28	Safety Breakaway Coupling Pump	38	78	43	M28	0.340 lbs	350 LBS
PUMP-IN 56125	1" BSP	Safety Breakaway Coupling Pump	38	99	43	1"	0.330 lbs	350 LBS
PUMP-IN 56145	M34	Safety Breakaway Coupling Pump	38	78	43	M34	0.350 lbs	350 LBS