



Break aways - 1" Standard

Model No.: IN 4650 & 60 B - Non Reconnectable Break away &

Model No.: IN 4650 & 60 C - Reconnectable Break away



TECHNICAL SPECIFICATION :

Type	: 2 Way (NO)
Size	: 1" NPT / BSP
Body material	: Aluminium
O rings & Seals	: FPM (Fluoroelastomer)
Fluid media	: Petrol / Diesel
Approvals	: Atex

FEATURES :

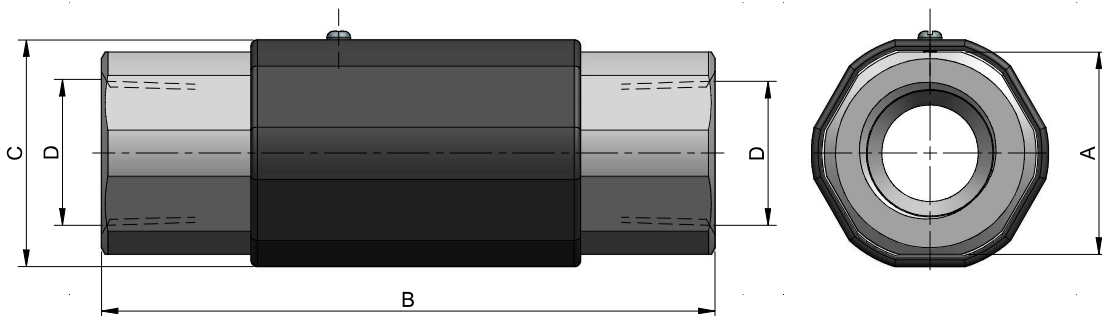
Infinity IN4650B & IN 4660 B Non Reconnectable Break away has economical design with 3/4" & 1" connection for standard hose application.

The double poppets seal both hoses upon separation.

Infinity IN4650C & IN4660 C Reconnectable Break away allows for immediate return to service after a drive away with no repair kit required.

This is made possible by a unique reconnectable design.

The double poppets seal both hoses upon separation.



Dimensions are in mm

Model No	Port Size (Inch)	Type	A	B	C	D (Inch)	Weight	Max. Separation Pull Force
IN 4650 B	3/4" NPT / BSP	Non Reconnectable	31.8	106.3	36.5	3/4"	0.4 lbs	350 LBS
IN 4650 C	3/4" NPT / BSP	Reconnectable	41.5	108.9	47	3/4"	0.8 lbs	350 LBS
IN 4660 B	1" NPT / BSP	Non Reconnectable	46	142.6	51.5	1"	0.8 lbs	350 LBS
IN 4660 C	1" NPT / BSP	Reconnectable	46	141.5	51.5	1"	1.0 lbs	350 LBS